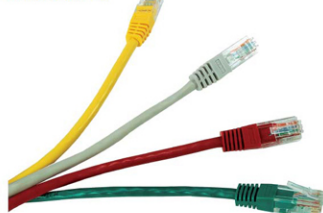
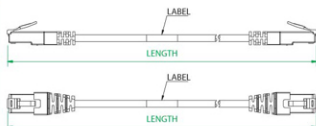


CAT 5E UTP PATCH CABLES

CAA01-UC5E-*#



Presentation



Use * to specify the length :

1=1 meter, 2=2 meters, 3=3 meters

Use # to specify the color :

A=black B=blue C=red D=orange
E=yellow F=gray G=green

Products Description

Constructed of High-Performance CAT5E Cable Suitable for 100MHz High-Speed Data Applications, Gigabit Ethernet, Fast Ethernet, 155Mbps TP-PMD/CDDI, Boots offer cable-end color ID, strain relief and RJ45 plug tab protection from snagging on cables or connectors when routing in ceilings and under floors, Suitable for indoor installations

Features and benefits

- 6-50 micron RJ-45 staggered gold plated connectors
- Fitted with strain relief boots
- With or without reports made to the order
- 100% Tested Wiring Sequence and Continuity
- Excellent Attenuation and Crosstalk Characteristics
- Connector with staggered pin configuration to limit cross talk
- Exceed Category 5E requirement
- They are available in a variety of the lengths

CAT 5E UTP MODULAR PLUGS

Products Description

We offer modular plugs in standard configuration terminate modular cords for patching or Work area application, modular plugs can be terminated to the exact cable length in order to Maintain a neater, more organized installation, the plugs terminate twist pair cable with 26-22 AWG solid all plugs contracts have 50 micron inches of gold plating over nickel.

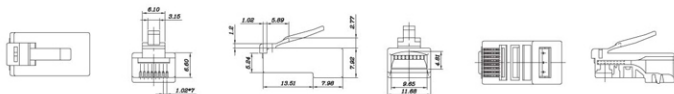
RJB01-UC5E



Features and benefits

- Clear color
- Meet or exceed the requirement in the Cat 5e T568 A and T568 B (Telecommunication requirement)
- Contacts are nickel plated, phosphor bronze with 6 to 50µ" gold plate
- Meets EIA/TIA 568 Cat 5E (Cat 3) specification
- Contact blade : phosphor bronze
- Exclusive stagger conductors guide design reduces near end cross talk

RJB01-UC5E Presentation



Order Information

Part number	Description	Inner box	Carton	Carton measurement	Carton weight
RJB01-UC5E	Cat 5E UTP Modular plugs	500PCS	5000PCS	L 53.5cm × W 31.3cm × H 23.4cm	9KG
CAA01-UC5E-*#	Cat 5E UTP Patch Cable				
CAA01-UC5E-LSZH-*#	Cat 5E UTP Patch Cable				
CAA01-UC5E-CMR-*#	Cat 5E UTP Patch Cable				